



## LONDON DESK

The London is a deceptively simple and elegant desk with three shallow drawers on finger-pulls. The desk is shown in American walnut with Midnight leather skiver. The leather skiver is optional and offered in our standard colours of Midnight, Seal Grey, Savannah and Claret.

The London desk can be customised with leather drawer fronts and sides, inlays, handles and stretchers.

The desk is available in all our veneers and finishes, in bespoke dimensions and is hand-made in the UK by our skilled craftsmen.

### DIMENSIONS (mm)

1600 W

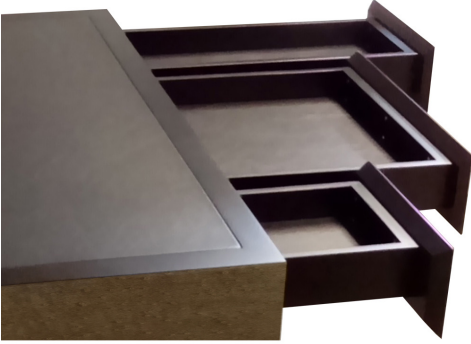
650 D

750 H



INDUSTRY  
PARTNER

## SPECIFICATIONS



### LONDON DESK

**DIMENSIONS** 1600 W  
 (mm) 650 D  
 750 H

**FINISHES** Noir (shown)  
 Desk Veneer  
 Liquid metal  
 Satin/gloss lacquer

**DETAILING OPTIONS** Polished nickel  
 With or without stretchers Polished brass

**FINISHES** Smoke bird's eye maple Faux leather  
 Drawer fronts (shown) Satin/gloss lacquer  
 Veneer Leather  
 matching/contrasting Liquid metal

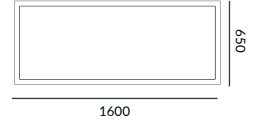
**LEATHER TOP OPTIONS** Seal grey (shown)  
 With or without Faux leather  
 Customer's own leather

**HANDLES** Most pull handles from  
 Optional our collection suit this piece

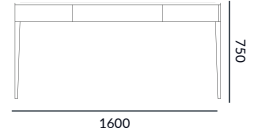
The desk is available in all our veneers and finishes, in bespoke dimensions and is hand-made in the UK by our skilled craftsmen.

### LINE DRAWINGS

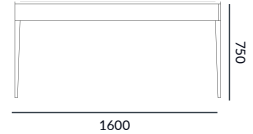
Plan



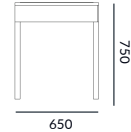
Front elevation



Back elevation



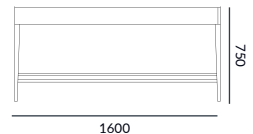
Side elevation



Front elevation - with stretchers



Back elevation - with stretchers



Side elevation - with stretchers

