



BONGO II COFFEE TABLE

The Bongo II coffee table is shown in Bolivar Thunder. The inset top, inlaid banding and plinth are in Pewter bird's eye maple veneer.

An infinite variety of combinations are possible using our many finishes and veneers. As our other pieces, this table is available in bespoke dimensions and is hand-made in the UK by our skilled craftsmen.

DIMENSIONS (mm)

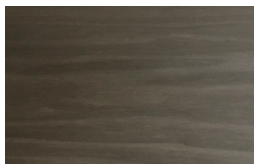
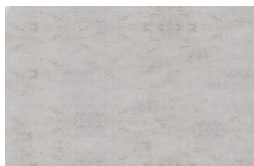
1000 Ø

400 H



INDUSTRY
PARTNER

SPECIFICATIONS



BONGO II COFFEE TABLE

DIMENSIONS
(mm) 1000 Ø
400 H

FINISHES
Drum Bolivar Thunder (shown)
Veneer
Satin/gloss lacquer

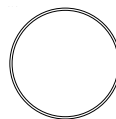
FINISHES
Top Pewter bird's eye maple (shown) Antiqued mirror
Marble
Matching/contrasting veneer Satin/gloss lacquer

FINISHES
Inlay/plinth Pewter bird's eye maple (shown) Satin/gloss lacquer
Veneer

Most veneers and finishes from our collection are available for this piece.
Dimensions can be customised.

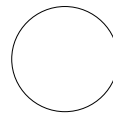
LINE DRAWINGS

Bongo II – plan with inset top



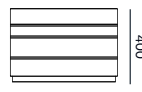
1000

Bongo II – plan without inset top



1000

Bongo II – elevation



1000