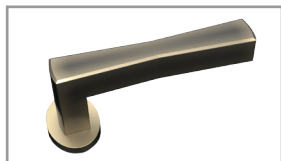


Black & Key

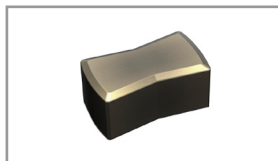
BOW LEVER HANDLE
Antique brass (shown)
136 W x 25 D x 60 H



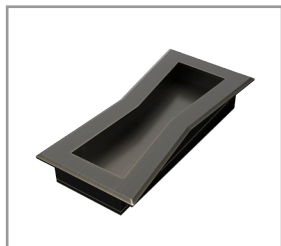
BOW MORTICE KNOB
Antique brass (shown)
115W x 25 D x 60 H



BOW TURN
Antique brass (shown)
34 W x 20 D x 17 H



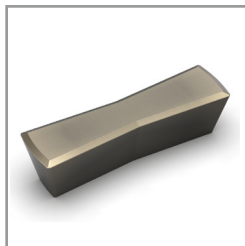
BOW FLUSH PULL
Antique brass (shown)
175 W x 76 D x 21 H



BOW PULL
Antique brass (shown)
400 W x 25 D x 50 H



BOW CABINET HANDLE
Antique brass (shown)
70 W x 19 D x 19 H



THE BOW COLLECTION OF ARCHITECTURAL IRONMONGERY

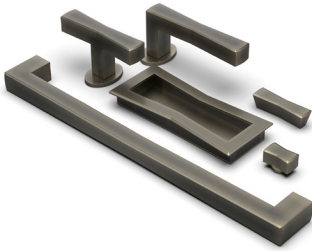
Crafted to the highest standards, this is Black & Key's first complete suite of ironmongery, available in many waxed metal finishes as standard and customisable to special order. The collection is based on our unique and sophisticated Bow cabinet handle and was created in close collaboration with SDS' experienced and skilled team.

Dimensions and finishes can be customised for large orders.



INDUSTRY
PARTNER

SPECIFICATIONS



THE BOW COLLECTION

DIMENSIONS (mm)	Lever handle	Mortice knob	Turn
	136 W	155 W	34 W
	25 D	25 D	20 D
	60 H	60 H	17 H
	Flush pull	Pull	Cabinet handle
	175 W	400 W	70 W
	76 D	25 D	19 D
	21 H	50 H	19 H

STANDARD WAXED FINISHES	Antique brass (shown)
	Polished brass (shown)
	Bronze
	Black bronze
	Polished/brushed/industrial copper

BESPOKE FINISHES (waxed or varnished)	Polished/antique/brushed brass
	Polished/brushed nickel
	Polished/brushed chrome
	Bronze
	Black bronze
	Polished/brushed/industrial copper

Dimensions and finishes can be customised for large orders.

LINE DRAWINGS

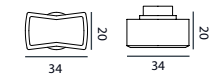
LEVER HANDLE plan/elevation



MORTICE KNOB plan/elevation



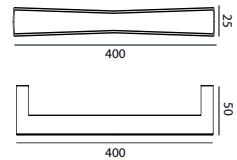
TURN plan/elevation



FLUSH PULL plan/elevation



PULL plan/elevation



BOW plan/elevation

